



# WETLAND

COLLECTION



**VOXFLOR®**

[www.voxflor.com](http://www.voxflor.com)

Shanghai **Headquarters**

T +86 021 62989325

Milano **Creative Studio**

T +39 3885863150

China **Branch Offices**

Beijing/ Guangzhou/ Shenzhen/ Xiamen



# 00.

## OUR GOAL

Wetland is **a unique organic pattern in 12 colors that cleverly uses light and shade to create a soft natural movement** on the floor. Adding an extra dimension is **the use of the 5 accent colors in Wetland's accent pattern "Awake"** which so subtly break through the pattern **like reflections in the water**.

**VOXFLO®**  
MILANO CREATIVE STUDIO



Wetland 200, 300, 201

# 01.

## WETLAND ORIGINS

**Delicate texture** and the embellished **color accent** fully **highlight** the products.

Wetland is a product based on a fully organic pattern with soft natural color accent which provides a gentle and elegant solution for those spaces which require a neutral background but not a fully neutral flooring. The soft tints used in the carpet tiles generate calm dynamics into the pattern so to create unique combinations enhancing the whole interior design, without overtaking its neutrality. The fill color product, Awake, by using the same hues of Wetland, extends the flooring design options with a natural textured design and delicate tones.

# WETLAND PRODUCTS PASSION & PRECISION



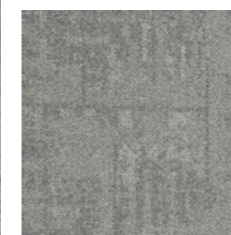




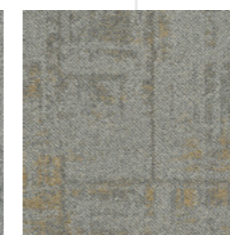
Wetland 200, 201



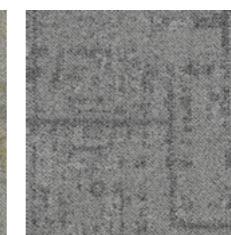
Wetland 202



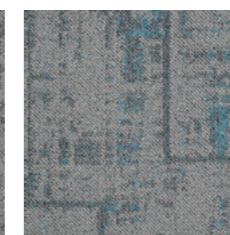
Wetland 100



Wetland 101



Wetland 200



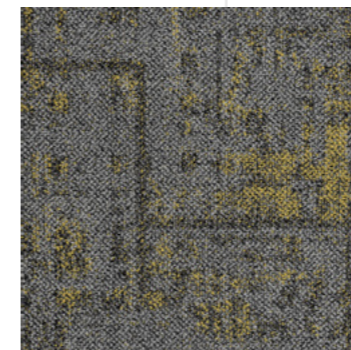
Wetland 201



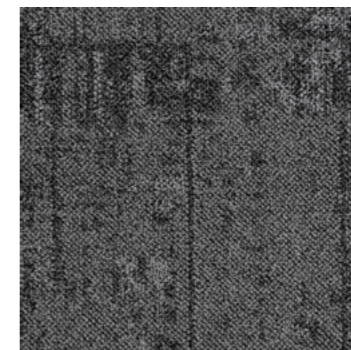
Wetland 202



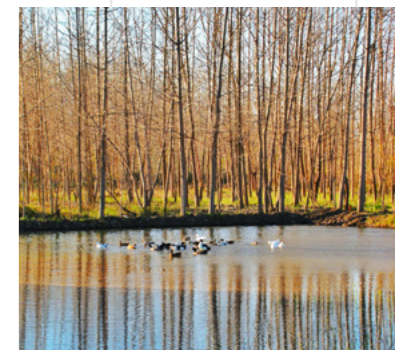
Wetland 300, 302; Awake 5301



Wetland 302



Wetland 400



# 02.

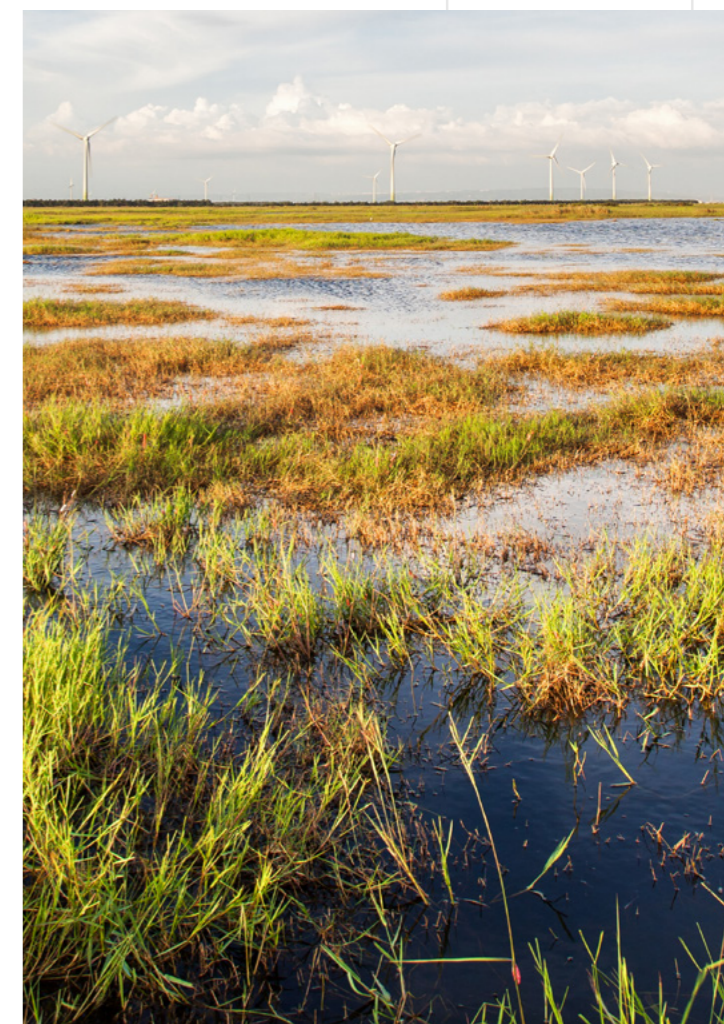
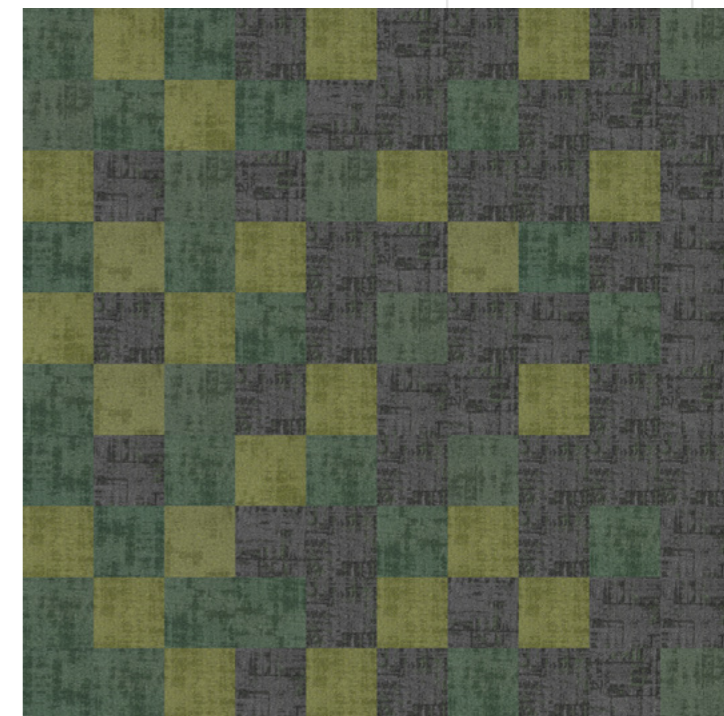
AWAKE

**Awake** introduces the **pop color aspect in the collection**. The embellished **color fabric** of this product fully highlights the true quality of its material.

The featured products highlight the appearance of the pop color tiles, when used together with our other product creating an extra dimension in the interior space.

SUITABLE  
**UP TO PAR**  
AND SUPERIOR  
QUALITY







Wetland 200, Awake 5201

Wetland Colors



Wetland 100



Wetland 200



Wetland 300



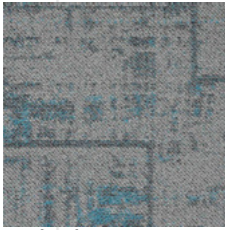
Wetland 400



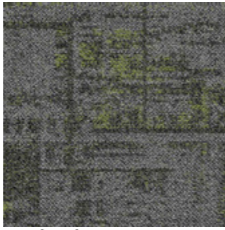
Wetland 600



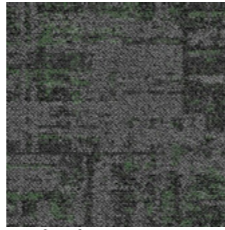
Wetland 101



Wetland 201



Wetland 301



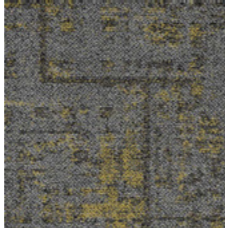
Wetland 401



Wetland 601



Wetland 202



Wetland 302

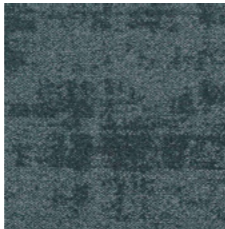
Awake Colors



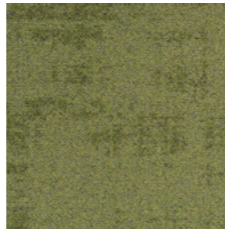
Awake 5101



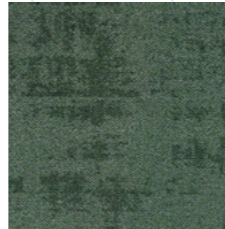
Awake 5201



Awake 5202

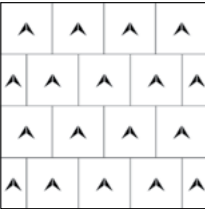


Awake 5301



Awake 5401

Installation Methods



Brick



Quarter-trun

Specifications

Style Name:	Wetland; Awake
Construction:	Multi-Level loop
Fiber:	Voxflor® Certified Nylon
Gauge:	1/12"
Stitches:	12 per inch
Pile Weight:	20 OZ/yd <sup>2</sup>
Average Pile Height:	4.0 ± 0.5mm
Backing:	EcoAce-Bac®
Tile size:	50cm*50cm
Area of Use:	Commercial – Heavy Duty
Anti-microbial:	Ultra Fresh Treatment (Available)
Flammability:	ASTM E648 Class I, GB8624-2012 B1(C)
Smoke Density:	ASTM E662 Less than 450, GB/T 8627-1999
Static Propensity:	AATCC-134≤3.5 KV, GB/T 18044-2008



Wetland 200, 201

## Manufacture System

# SOLAR

made carpet

VOXFLOOR builds its own solar power generation system and use clean energy to produce in a sustainable way.



An Environmental Product Declaration (EPD) tells the life cycle story of a product in a single, comprehensive report. The EPD provides information about a product's impact upon the environment, such as global warming potential, smog creation, ozone depletion and water pollution.



Administered by the Singapore Environment Council (SEC) since 1999, It is Singapore's leading environmental standard and certification mark with over 3800 unique products certified across 43 countries.

### Credits Contribution to:



LEED (Leadership in Energy and Environmental Design) is the most widely used green building rating system in the world. LEED certification is a globally recognized symbol of sustainability achievement and leadership.



Our manufacture system has been certified under ISO 9001, ISO 14001 and ISO 45001, which means with the management, production facility and the strict quality controls, VOXFLOOR® represents qualified and trusty products.



EcoAce-Bac®  
GLP No. : 100231

Green Label Plus is an independent testing program that identifies carpet, adhesives, and cushion with very low emissions of VOCs to help improve indoor air quality.



VOXFLOOR recommends using its own carpet tile tackifier with rust inhibitor. It is an EC-1 PLUS certified adhesive.



Ultra-Fresh is a portfolio of antimicrobial treatments developed by Thomson Research Associates, Inc. Customer can choose this High-Performance Antimicrobial Technology.



WELL is the leading tool for advancing health and well-being in buildings globally. Register your office, building or other space to leverage WELL's flexible framework for improving health and human experience through design.



Declare.

Declare is a transparency platform to share and find healthy building products. VOXFLOOR's EcoAce-Bac® Collection reach "Red List Free" grade.



CE marking indicates that a product has been assessed by the manufacturer and deemed to meet EU safety, health and environmental protection requirements.



Cradle to Cradle Certified® is the global standard for products that are safe, circular and responsibly made. It is to ensure the impact of their products on people and planet is a positive one.

# A WORLD WITHOUT WETLANDS IS A WORLD WITHOUT WATER.



Wetland 401