

WETLAND

COLLECTION

01.

A RECALL FROM NATURE

We want to build up a **concept around nature**. What **wetlands** are carrying behind could be the **strongest message** we'd like to send to people.

02.

SYMBOLIZED COLOR ACCENTS

Like the **texture of the wetland**, it differs from place to place, **yellow-ish, green-ish or even blue-ish** are fully inspired by the concept behind this collection.

03.

NATURAL VIBE

Subtle feeling around every details, **organic colors** and patterns are **the core of this collection**.

VOXFLOP
passion and purpose

00.

OUR GOAL

Wetland is **a unique organic pattern in 12 colors that cleverly uses light and shade to create a soft natural movement** on the floor. Adding an extra dimension is **the use of the 5 accent colors in Wetlands' accent pattern "Awake"** which so subtly break through the pattern **like reflections in the water**.

VOXFLO®
MILANO CREATIVE STUDIO





01.

WETLAND ORIGINS

Delicate texture and the embellished **color accent** fully **highlight** the products.

Wetland is a product based on a fully organic pattern with soft natural color accent which provides a gentle and elegant solution for those spaces which require a neutral background but not a fully neutral flooring. The soft tints used in the carpet tiles generate calm dynamics into the pattern so to create unique combinations enhancing the whole interior design, without overtaking its neutrality. The fill color product, Awake, by using the same hues of Wetland, extends the flooring design options with a natural textured design and delicate tones.



A photograph of a wetland landscape. In the foreground, there are tall, golden-brown grasses and some green shrubs. A body of water is visible in the middle ground, reflecting the sky. The background shows a line of trees and hills under a blue sky with scattered white clouds. The text is overlaid on the image in a large, white, sans-serif font.

WETLAND PRODUCTS ON & PASSION



Wetland 100, 101

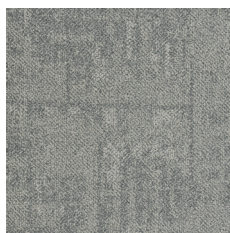




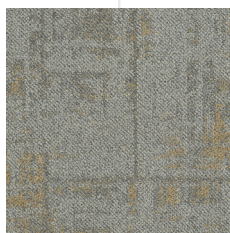
Wetland 200, 201



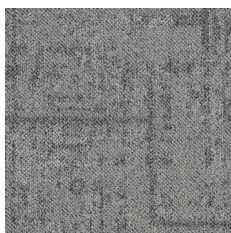
Wetland 202



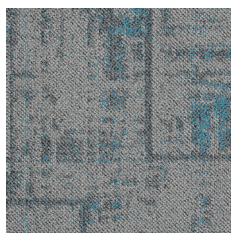
Wetland 100



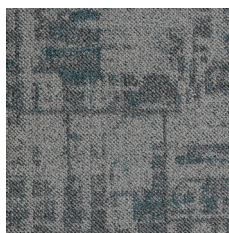
Wetland 101



Wetland 200



Wetland 201



Wetland 202

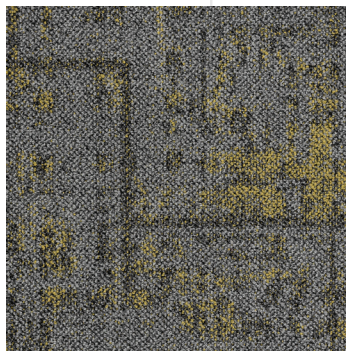
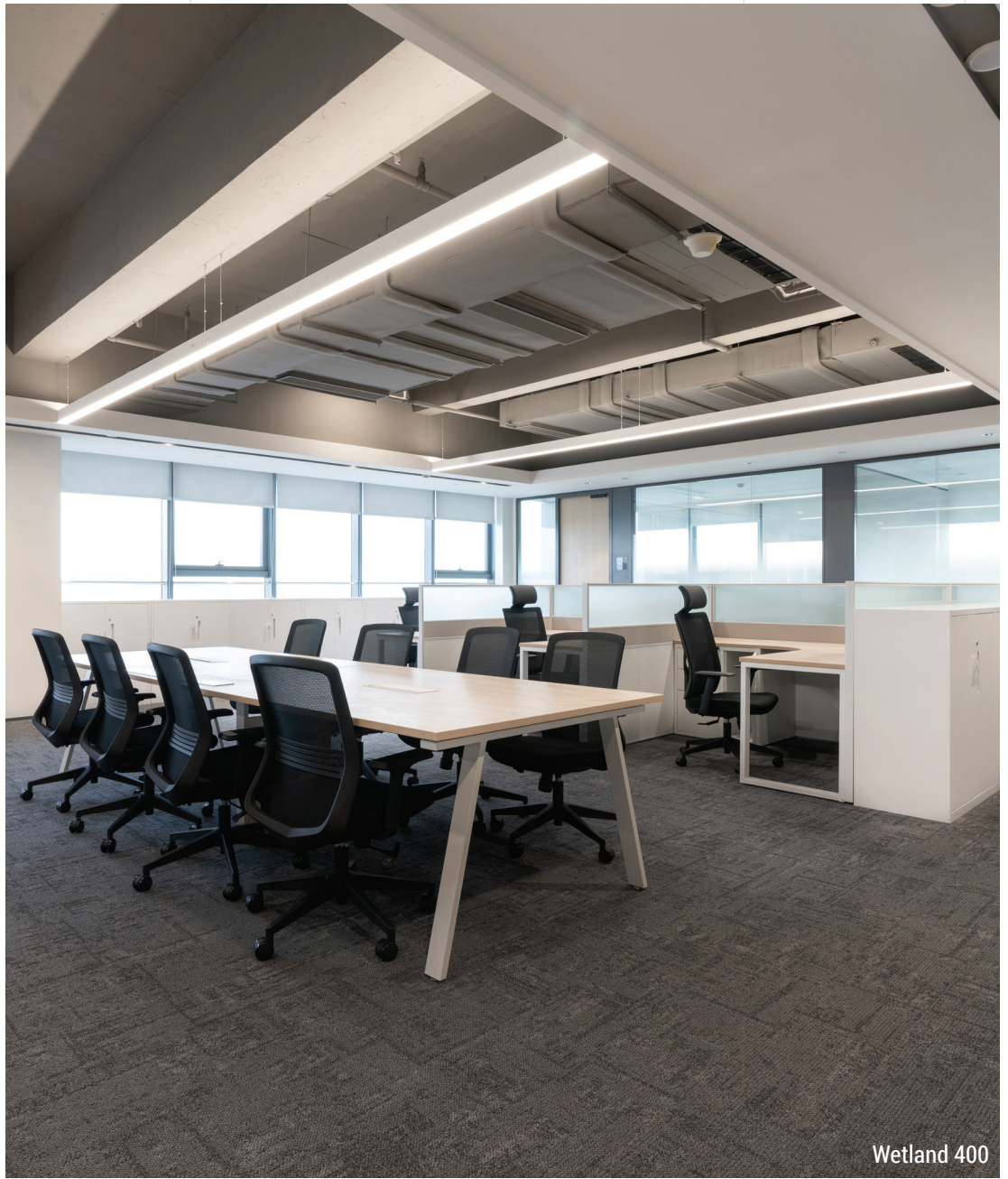


Wetland 300, 302; Awake 5301

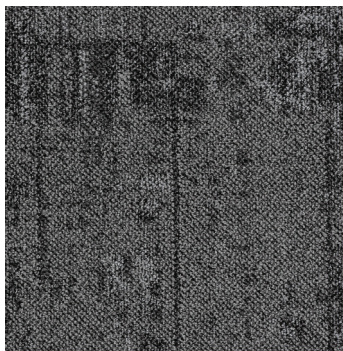




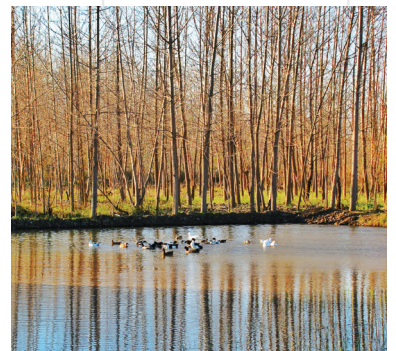
Wetland 302

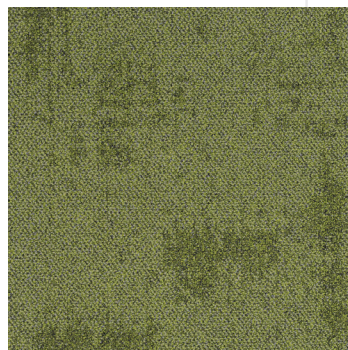
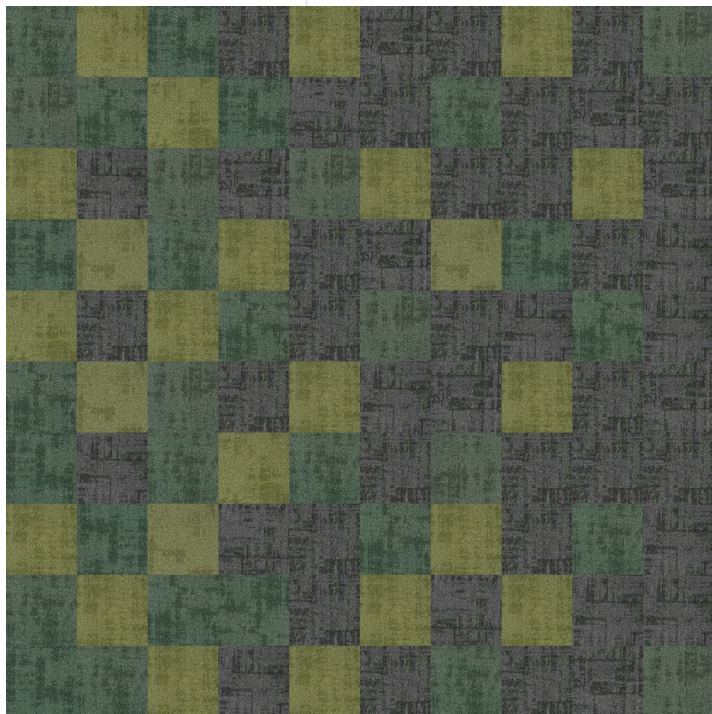


Wetland 302

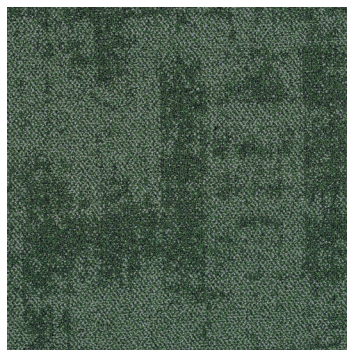


Wetland 400





Awake 5301



Awake 5302





Wetland 401; Awake 5301, 5401

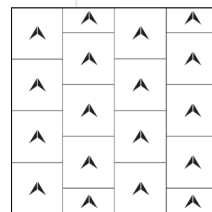


Wetland 300

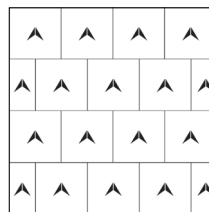
Specifications

Style Name:	Wetland; Awake
Construction:	Multi-Level loop
Fiber:	Voxflor® Certified Nylon
Gauge:	1/12"
Stitches:	12 per inch
Pile Weight:	20 OZ/yd ²
Average Pile Height:	4.0 ± 0.5mm
Backing:	EcoAce-Bac®
Tile size:	50cm*50cm
Total Thickness:	6.5 ± 0.5 mm
Area of Use:	Commercial – Heavy Duty
Anti-microbial:	Ultra Fresh Treatment (Available)
Flammability:	ASTM E648 Class I, GB8624-2012 B1(C)
Smoke Density:	ASTM E662 Less than 450, GB/T 8627-1999
Static Propensity:	AATCC-134≤3.5 KV, GB/T 18044-2008

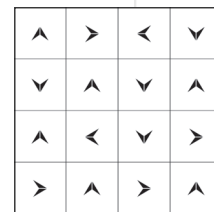
Installation Methods



Ashlar



Brick

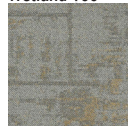


Quarter-trun

Colors



Wetland 100



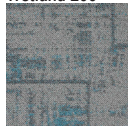
Wetland 101



Awake 5101



Wetland 200



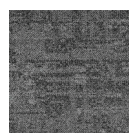
Wetland 201



Wetland 202



Awake 5201



Wetland 300



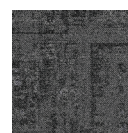
Wetland 301



Wetland 302



Awake 5202



Wetland 400



Wetland 401



Awake 5301



Wetland 600



Wetland 601



Awake 5401

Manufacture System

SOLAR
made carpet

VOXFLOOR builds its own solar power generation system and use clean energy to produce in a sustainable way.

Product Further Info



An Environmental Product Declaration (EPD) tells the life cycle story of a product in a single, comprehensive report. The EPD provides information about a product's impact upon the environment, such as global warming potential, smog creation, ozone depletion and water pollution.



CE marking indicates that a product has been assessed by the manufacturer and deemed to meet EU safety, health and environmental protection requirements.

Credits Contribution to:



LEED (Leadership in Energy and Environmental Design) is the most widely used green building rating system in the world. LEED certification is a globally recognized symbol of sustainability achievement and leadership.



EcoAce-Bac®
GLP No. : 100231

Green Label Plus is an independent testing program that identifies carpet, adhesives, and cushion with very low emissions of VOCs to help improve indoor air quality.



VOXFLOOR recommends using its own carpet tile tackifier with rust inhibitor. It is an EC-1 PLUS certified adhesive.



WELL is the leading tool for advancing health and well-being in buildings globally. Register your office, building or other space to leverage WELL's flexible framework for improving health and human experience through design.



Our manufacture system has been certified under ISO 9001, ISO 14001 and ISO 45001, which means with the management, production facility and the strict quality controls, VOXFLOOR® represents qualified and trusty products.

Declare.



Declare is a transparency platform to share and find healthy building products. VOXFLOOR's EcoAce-Bac® Collection reach "Red List Free" grade.



Ultra-Fresh is a portfolio of antimicrobial treatments developed by Thomson Research Associates, Inc. Customer can choose this High-Performance Antimicrobial Technology.



**LIVING
BUILDING
CHALLENGE™**

The Living Building Challenge (LBC) is a certification program that defines the most advanced measure of sustainability. It uses the metaphor of a flower because the ideal built environment should function as cleanly and efficiently as a flower.

**A WORLD WITHOUT
WETLANDS IS
A WORLD
WITHOUT WATER.**





VOXFLOR®
www.voxflor.com

Shanghai **Headquarters**
T +86 021 62989325

Milano **Creative Studio**
T +39 3885863150

China **Branch Offices**
Beijing/ Guangzhou/ Shenzhen/ Xiamen
T 400 021 0790

