



# THRIVE

## COLLECTION

**01.**

---

### THRIVE TONE

A soft organic pattern using seven simple tone-on-tone colors to give a more dynamic floor design.

**02.**

---

### ORGANIC AND SEAMLESS PATTERN

The original concept of the product is derived from every life path and it has been embroidered onto VOXFLO®R carpet.

**03.**

---

### FRESH COLOR SOLUTIONS

Thrive Edge and Thrive Color create four more colors. Natural filter for satisfying potential needs.

**VOXFLO®R**  
*passion and purpose*



# 00.

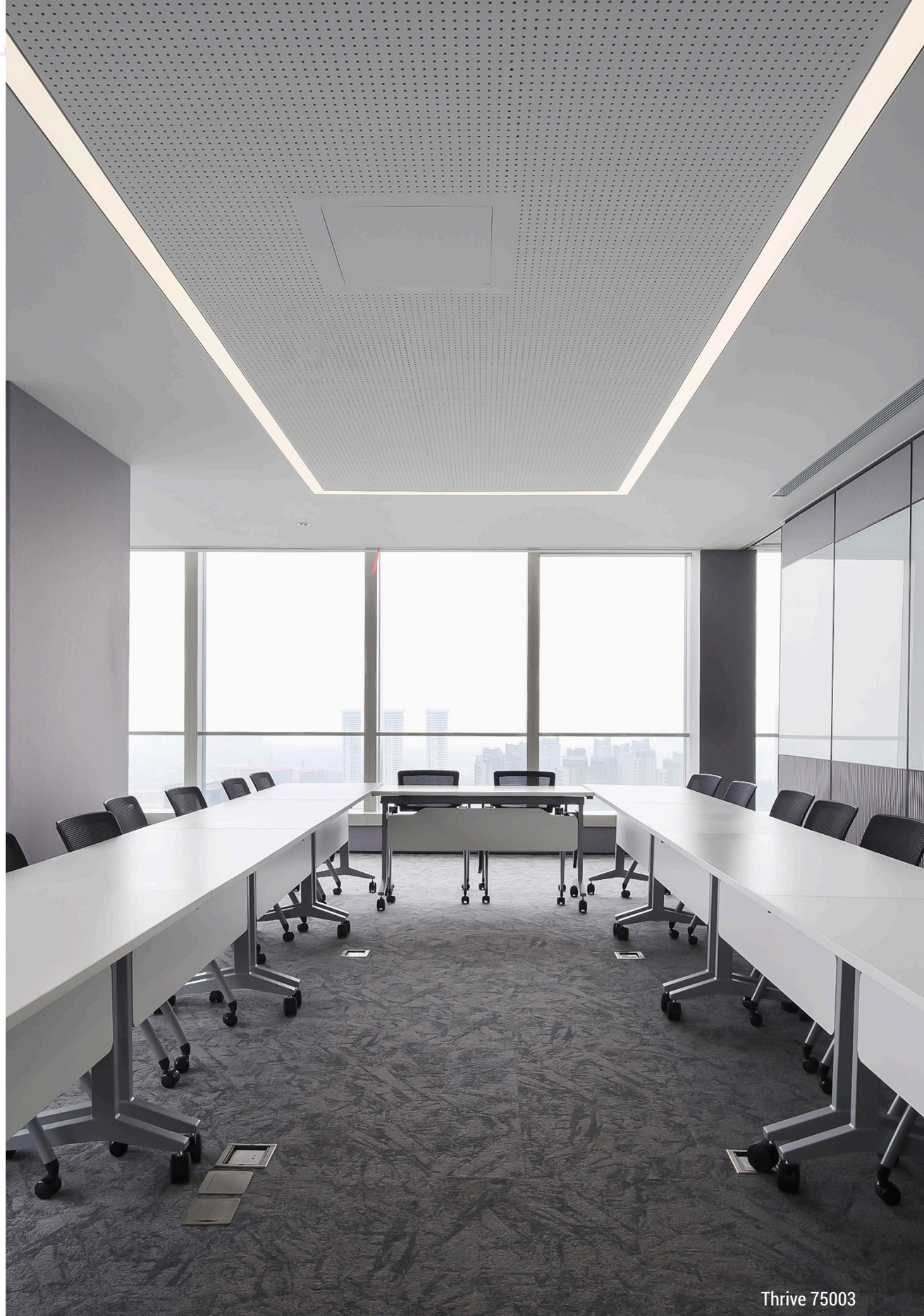
OUR GOAL

**Seamless product with organic pattern**, the soft gray and beige serve most of needs in a space, quite a partner for any furnishings. **7 basic colors and 4 other paring colors** complete Thrive Collection. **Thrive from life, settle in the simplicity.**

**VOXFLO<sup>R</sup>**   
MILANO CREATIVE STUDIO







Thrive 75003

# 01.

## THRIVE TONE

Like nature's floors Thrive is at home in any environment. **A soft organic pattern using seven simple tone-on-tone colors** works beautifully on their own or coordinates together to **give a more dynamic floor design.**

The original concept of the product itself is derived from every life path and it has been embroidered onto VOXFLO carpet. Whether a life with fortunate or risks, all are blessed with a strong instinct of all lifes try to thrive among each other.







**LIFE IN  
ALL IT'S  
FULLNESS**





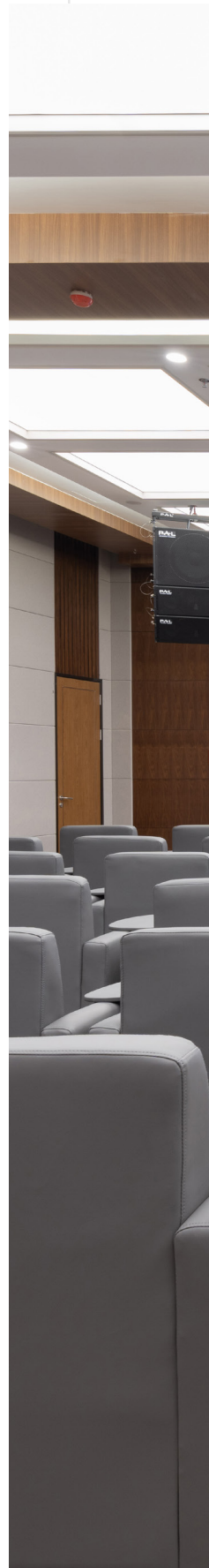
Thrive 75001



Thrive 75001



Thrive 75002







Thrive 75001





Thrive 75002







THRIVE  
**75003**







Thrive 75003





Thrive 75004





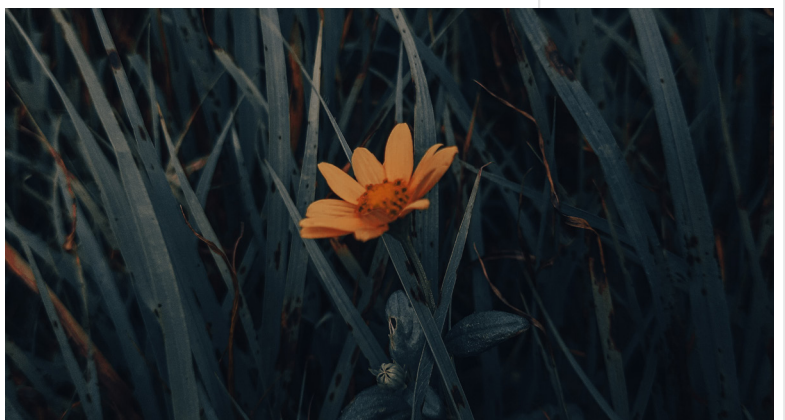
Thrive 75005



Thrive 75004



Thrive 75005







Thrive 75007



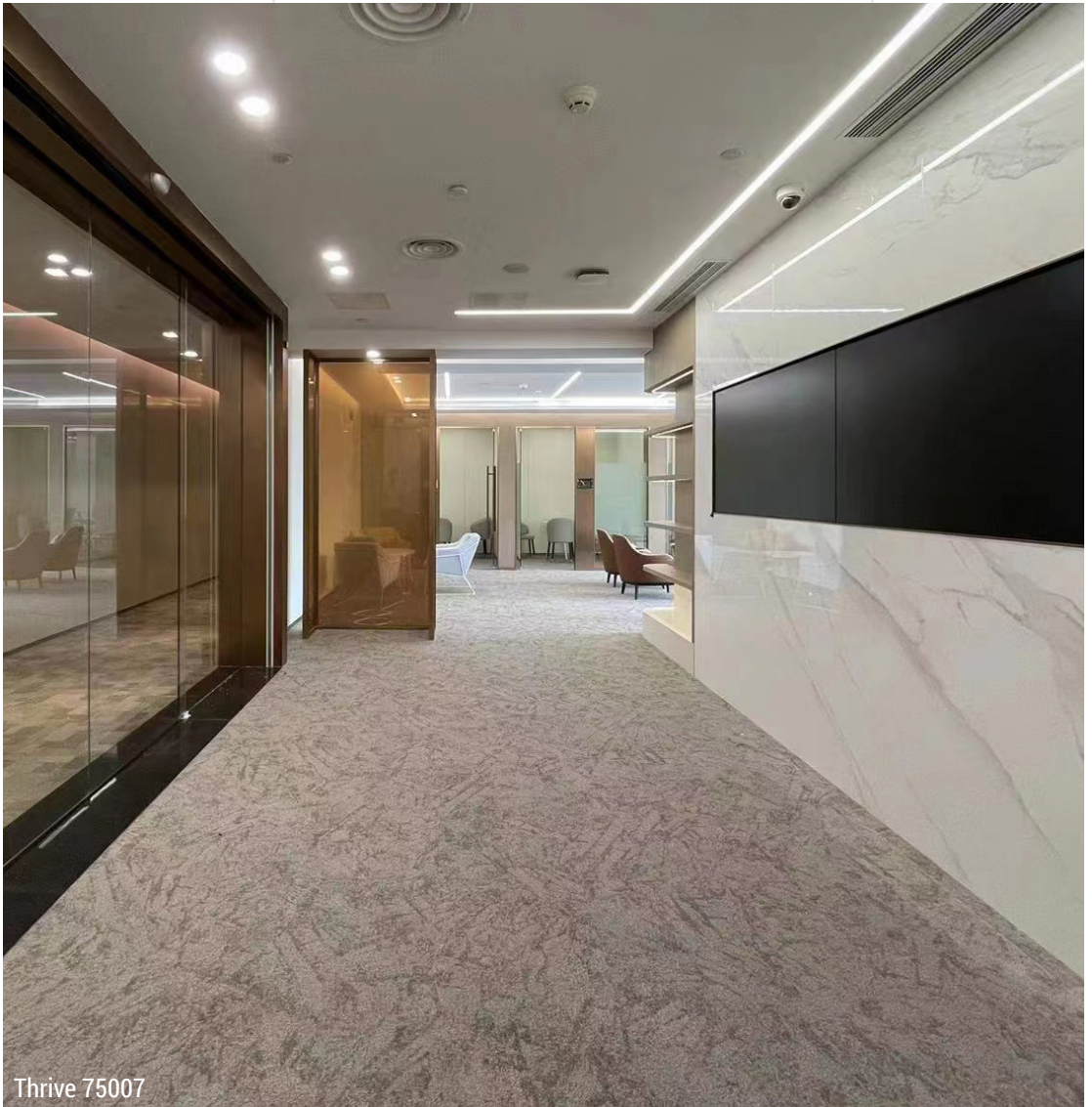




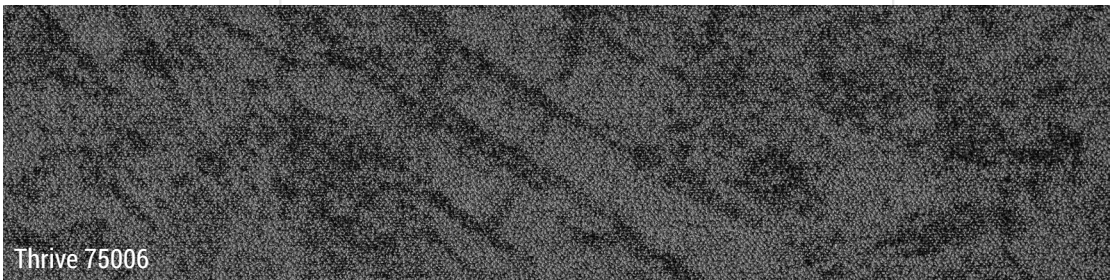


Thrive 75006





Thrive 75007

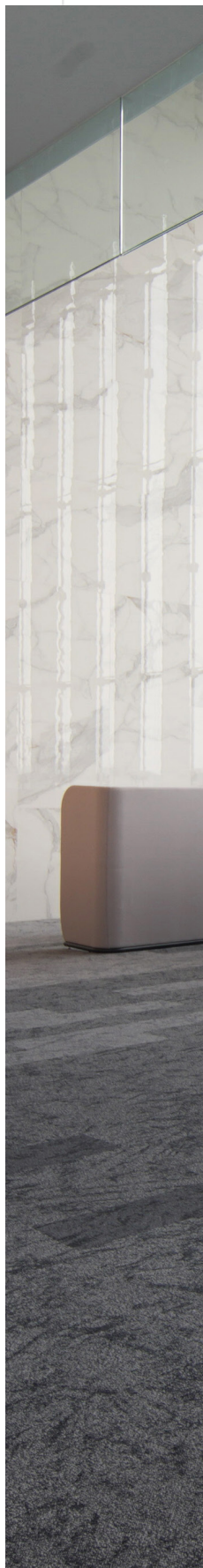


Thrive 75006



Thrive 75007





Thrive 75003, 75005, 75006





Thrive 75003, 75005, 75006





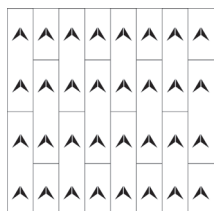
Thrive 75005



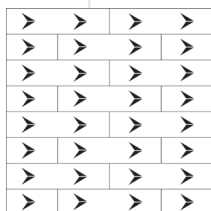
## Specifications

Style Name:	Thrive
Construction:	Multi-Level loop
Fiber:	Voxflor® Certified Nylon
Gauge:	1/10"
Stitches:	12 per inch
Pile Weight:	17 OZ/yd <sup>2</sup>
Average Pile Height:	3.5 ± 0.5mm
Backing:	EcoAce-Bac®
Tile size:	25cm*100cm
Total Thickness:	5.5 ± 0.5 mm
Area of Use:	Commercial – Heavy Duty
Anti-microbial:	Ultra Fresh Treatment (Available)
Flammability:	ASTM E648 Class I, GB8624-2012 B1(C)
Smoke Density:	ASTM E662 Less than 450, GB/T 8627-1999
Static Propensity:	AATCC-134≤3.5 KV, GB/T 18044-2008

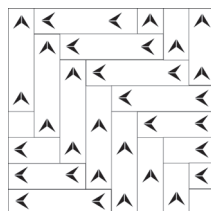
## Installation Methods



Ashlar

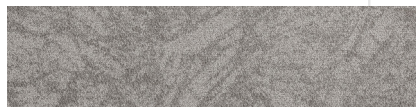


Brick

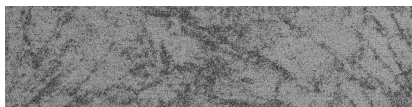


Herringbone

## COLORS



Thrive 75001



Thrive 75002



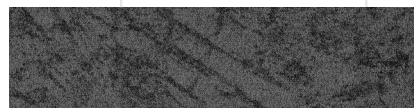
Thrive 75003



Thrive 75004



Thrive 75005



Thrive 75006



Thrive 75007



## Manufacture System

# SOLAR

made carpet

VOXFLOOR builds its own solar power generation system and use clean energy to produce in a sustainable way.



Our manufacture system has been certified under ISO 9001, ISO 14001 and ISO 45001, which means with the management, production facility and the strict quality controls, VOXFLOOR® represents qualified and trusty products.

## Product Further Info



An Environmental Product Declaration (EPD) tells the life cycle story of a product in a single, comprehensive report. The EPD provides information about a product's impact upon the environment, such as global warming potential, smog creation, ozone depletion and water pollution.



**EcoAce-Bac®**  
GLP No. : 100231

Green Label Plus is an independent testing program that identifies carpet, adhesives, and cushion with very low emissions of VOCs to help improve indoor air quality.



**Declare.**

Declare is a transparency platform to share and find healthy building products. VOXFLOOR's EcoAce-Bac® Collection reach "Red List Free" grade.



CE marking indicates that a product has been assessed by the manufacturer and deemed to meet EU safety, health and environmental protection requirements.



VOXFLOOR recommends using its own carpet tile tackifier with rust inhibitor. It is an EC-1 PLUS certified adhesive.



Ultra-Fresh is a portfolio of antimicrobial treatments developed by Thomson Research Associates, Inc. Customer can choose this High-Performance Antimicrobial Technology.

## Credits Contribution to:



LEED (Leadership in Energy and Environmental Design) is the most widely used green building rating system in the world. LEED certification is a globally recognized symbol of sustainability achievement and leadership.



WELL is the leading tool for advancing health and well-being in buildings globally. Register your office, building or other space to leverage WELL's flexible framework for improving health and human experience through design.



**LIVING  
BUILDING  
CHALLENGE™**

The Living Building Challenge (LBC) is a certification program that defines the most advanced measure of sustainability. It uses the metaphor of a flower because the ideal built environment should function as cleanly and efficiently as a flower.



**THIS IS THE  
LIFE THAT  
STRIVES TO  
THRIVE.**







**VOXFLOR®**

[www.voxflor.com](http://www.voxflor.com)

Shanghai **Headquarters**

T +86 021 62989325

Milano **Creative Studio**

T +39 3885863150

China **Branch Offices**

Beijing/ Guangzhou/ Shenzhen/ Xiamen

T 400 021 0790

